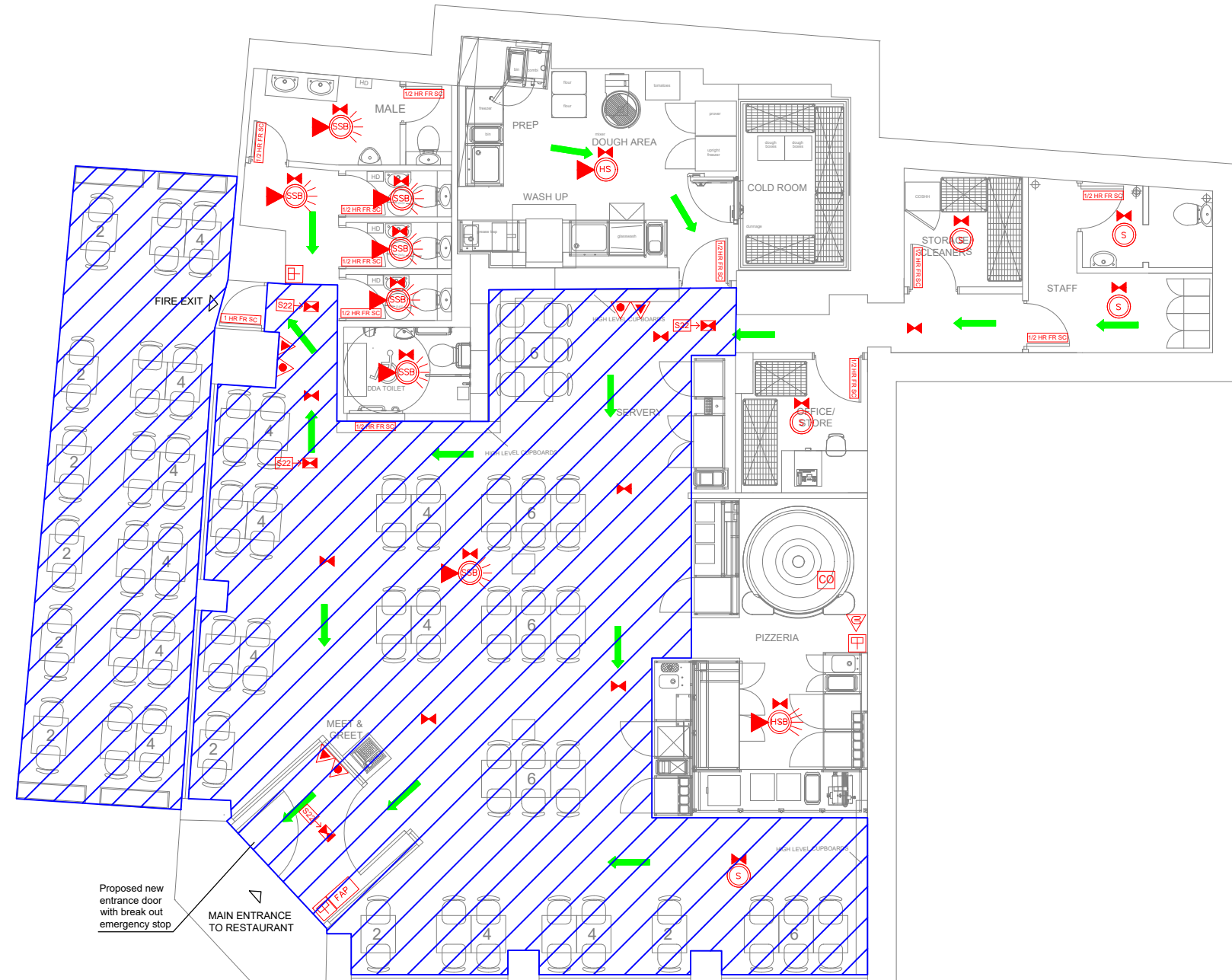


Fire safety standards and technical notes for licensing applications

- Doors and partitions required to be fire resisting are to be in accordance with BS 476, as amended
- Fire resisting doors required to resist the passage of smoke at ambient temperature conditions should, unless tested in accordance with BS 476, section 31.1, be fitted with a smoke seal
- The fire alarm system is to comply with BS 5839, part 1. The attention of the design/installing engineer should be drawn to paragraph 4.3 (consultation and records) of BS 5839, part 1, which requires consultation with the fire authority
- The emergency lighting installation is to comply with BS 5266, part 1. The attention of the design/installing engineer should be drawn to paragraph 4.3 (consultation and records) of BS 5839, part 1, which requires consultation with the fire authority
- Fire safety related signs and notices are to conform to current British standard, BS 5499, part 1 1990
- Illuminated 'exit' signs are to conform to BS 5499, parts 1 & 3.
- Firefighting equipment is to comply with BS en3 1-6, BS 7863, BS 7867 and BS 5306.
- Upholstered seating furniture must satisfy, as a minimum standard, ignition source 0 (cigarette test) and crib ignition source 5 as specified in BS 5862, 'methods of test for assessment of the ignitability of upholstered seating by smouldering and flaming ignition sources' if in order to secure compliance with the above standards the fabric submitted for test has been treated beforehand with a fire retardant product, the testing laboratory must be instructed to subject the samples to be treated to a water soak test, in accordance with BS 5651, paragraph 3, before the BS 5852 tests are carried out. A copy of the laboratory test report from an accredited testing laboratory identifying compliance of the furnishing composite with the above mentioned British standards must be forwarded to the fire authority before installation and confirmation that the furnishing specified in this certificate have been installed in the premises
- Curtains and other textile hangings must be inherently flame retardant or be treated with a durable flame retardant. They must be capable of complying with the 'type b' performance requirements of BS 5867, part 2 'specification for fabrics for curtains and drapes-flammability requirements'
- Artificial foliage and other decorative effects are to be fire retardant to the satisfaction of the fire authority
- Linings and surface finishes of walls and ceilings are to have a surface spread of flame rating as defined in the current building regulations
- Certificates of installation test will be required in respect of items numbered 3, 4, 6, 8 and 9 above and may be required for item 2
- Outer doors to entrance lobby are to be held open at all times during public trading periods
- All fire escape doors are to incorporate panic type opening latches for emergency escape
- Fire alarm system is to be interlinked with landlords fire alarm for rest of building



Fire Alarm System Legend

- Fire Alarm Panel
- Fire Alarm Call Point
- Smoke Detector
- Smoke detector with base mounted sounder
- Heat detector with base mounted sounder
- Area covered by automatic carbon monoxide detectors
- Carbon dioxide (CO2) fire extinguisher
- Water fire extinguisher
- Foam fire extinguisher
- Fire Blanket
- Area covered by a system of lighting, that will illuminate the escape route if the mains supply fails. E lighting system to be designed & installed in accordance with BS 5266
- Vision panel
- Fire exit notice, internally illuminated
- Smoke detector with base mounted sounder and beacon
- Heat detector with base mounted sounder beacon
- Proposed new licensed trading area 125 m² (1346 ft²) Including external area

Total area	186 m ² / (2002 ft ²)
BoH area	54 m ²
FoH area	132 m ²
Internal covers	64
External covers	36

NOTES
 All Dimensions must be checked on site and not scaled from this drawing.
 This drawing is the property of Stu Art Consultancy Ltd and they reserve the copyright. It is issued on the understanding that it will not be copied, reproduced or disclosed in whole or part to any unauthorized party without the written permission of Stu Art Consultancy Ltd.

Date	Revisions

STU ART CONSULTANCY
 Construction and Property
 Consultancy
 'Profitable Procurement Solutions for the Built Environment'
 7 The Workshops, Pulloxhill Business Park, Greenfield Road, Pulloxhill, Bedfordshire, MK45 5BF
 Tel: 01525 715 020 Fax: 01525 716852
 E-mail: enquiries@stuartconsultancyLtd.co.uk
 Web: www.stuartconsultancyLtd.co.uk

Job Name	Franco Manca
Site Address	Cathedral Square Peterborough
Drawing Title	Proposed Licensing Layout
Status	For Information

Date	23/08/2021
Chk	

FM/PET/03-1

~